



## Peckham, London, SE15 4ST

### STUNNING COMMERCIAL UNIT

UNIT DOESN'T COME WITH FURNITURE

£5,640 per month + VAT. This excludes rates/utilities.

Total square footage is 3,559sq/ft.

This stylish, open-plan hub includes expansive workshop and gallery areas,

ideal for exhibitions, meetings, co-working and more.

Key features also include a kitchenette and dedicated seating, perfect for hosting and additional breakout space, plus standout views of the city skyline.

A great fit for art or design collectives, startups, agencies, community and cultural institutions or as gallery and event space.

- Close to Overground Station
- Surrounded by Local Amenities
- 24 Hour Security
- Rooftop Bar
- Energy Bills £570+VAT
- Complete with a Kitchenette
- Private Seating Areas
- Stunning View of the City of London

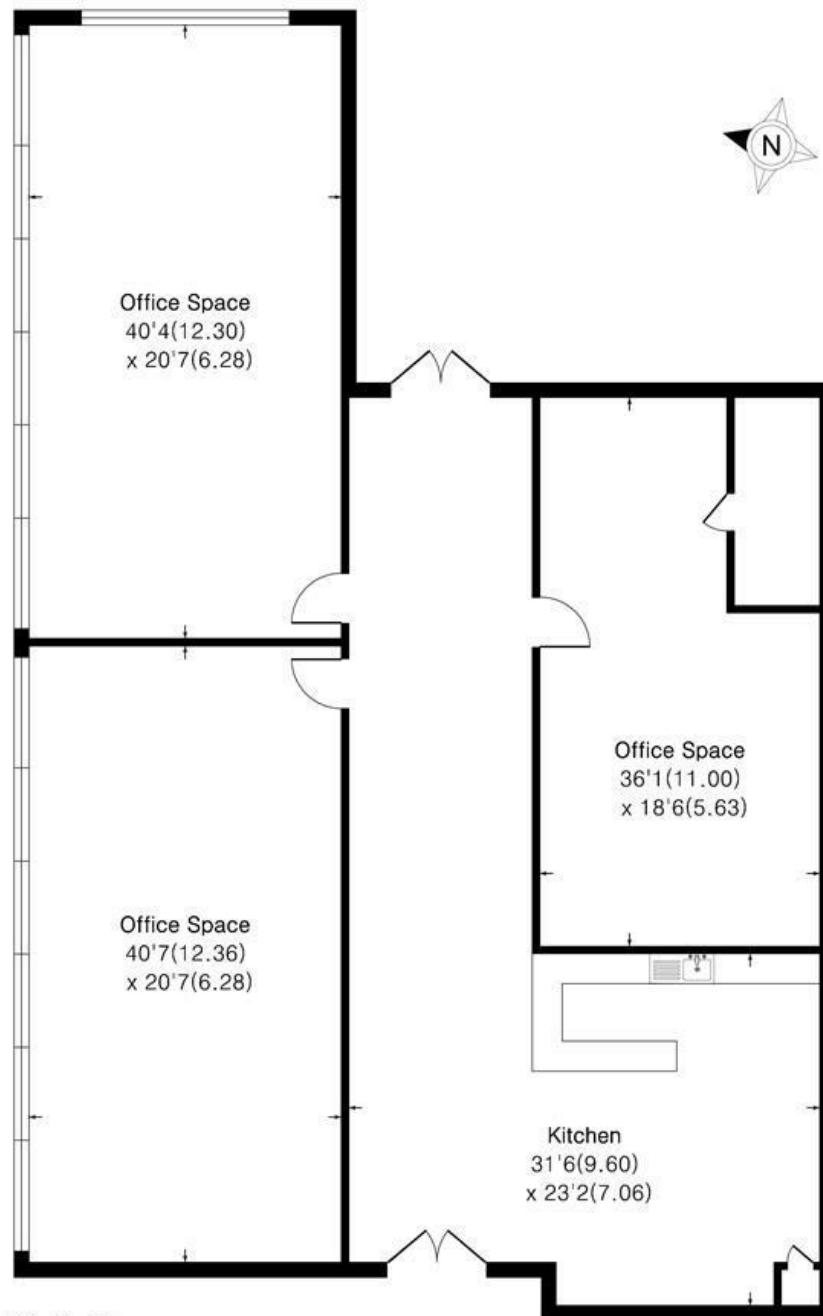
**Alex & Matteo**  
ESTATE AGENTS

**£5,640 Per month**

## Peckham Levels SE15

Approximate Area = 3522 sq ft / 327.2 sq m

For identification only - Not To Scale



Sixth Floor

**Alex & Matteo**  
ESTATE AGENTS

Floor plan Produced in accordance with RICS Property Measurement 2nd Edition.  
Incorporating International Property Measurement Standards (IPMS2 Residential).  
Produced for Alex & Matteo Estate Agents.

